

US PATENT PENDING: 14541100

Push Over Gate Assembly Instructions

Please visit our website for an assembly instructional video
www.pushovergate.com/#assembly

Parts Included:

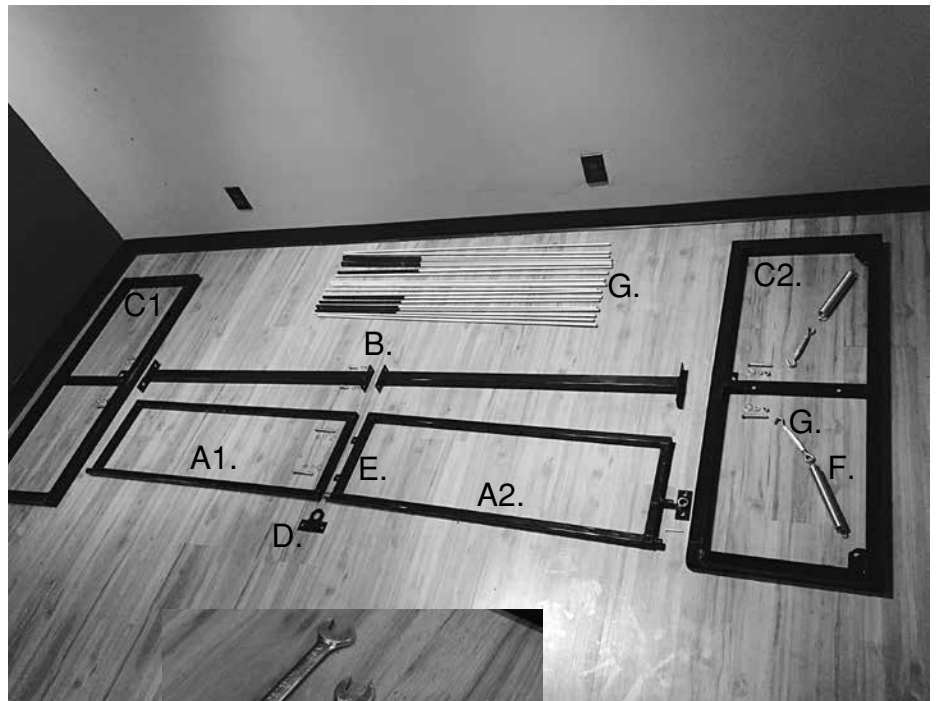
- A1. SWING FRAME
- A2. SWING FRAME WITH SPRING CONNECTOR
- B. CENTER SUPPORT BAR
- C1. OUTER SUPPORT FRAME
- C2. OUTER SUPPORT FRAME WITH SPRING CONNECTORS
- D. T-SUPPORT
- E. SPACERS (2)
- F. SPRINGS (2)
- G. TURNBUCKLES (2)
- H. FIBERGLASS RODS:
10 Reinforced, 10 regular

Hardware Included:

- COTTER PINS (20)
- 3/8" BOLTS:
 - 3" Length (2)
 - 2-1/2" Length(4)
 - 1" Length (2)
- LOCK WASHERS (8)
- FLAT WASHERS (6)
- NUTS (8)

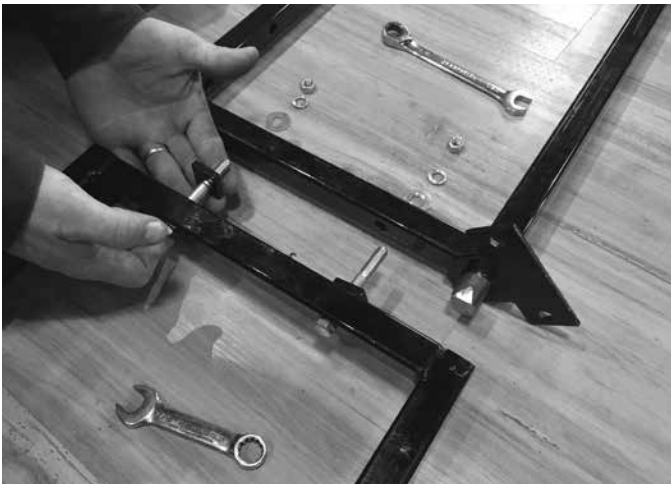
Suggested tools for assembly:

- 2, 9/16" boxed-end/open-end wrenches
- Needle-nosed pliers

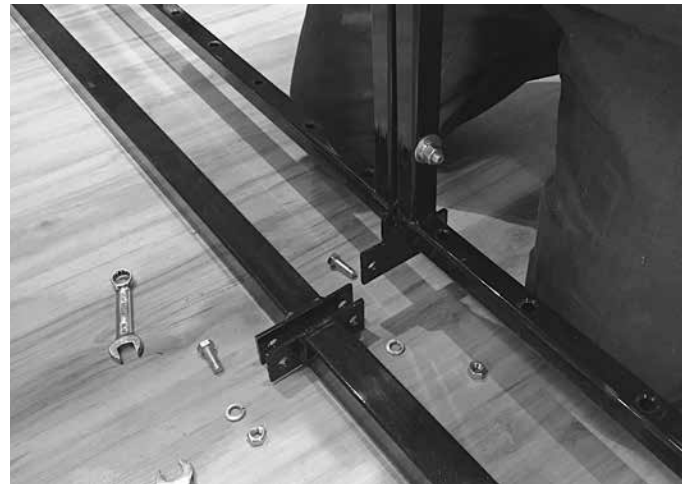


CAUTION: Always pass through the Push Over Gate at a low rate of speed.

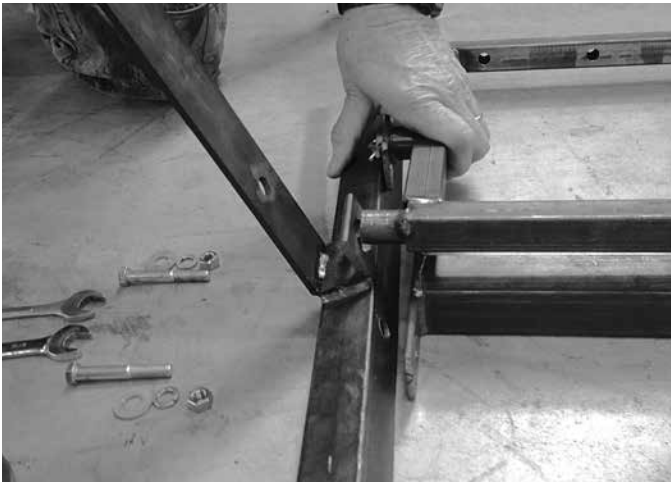
The PUSH OVER GATE is a US PATENT PENDING PRODUCT manufactured by ARNOLD UNLIMITED,
1793 Fayetteville Hwy., Belfast, TN 37019. (931) 270-6606. www.pushovergate.com



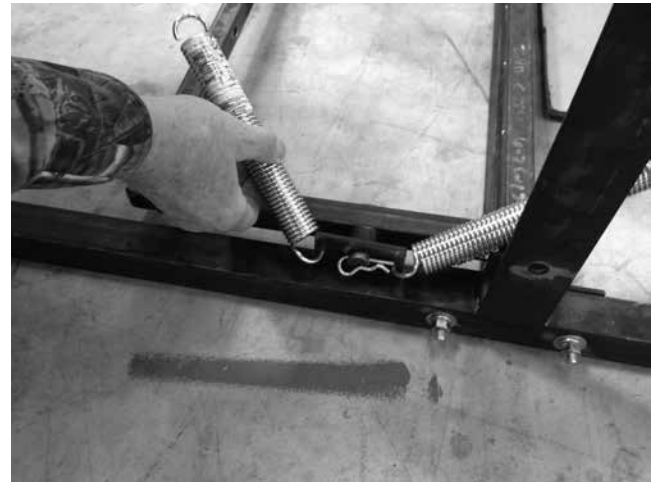
STEP 1. Assemble SWING FRAME using 2, 3/8" x 3" BOLTS. Place 1 spacer on each bolt between the frames being bolted together. Place T-SUPPORT on end of SWING FRAME. Fit the two parts of the frame together and secure with a FLAT WASHER, LOCK WASHER AND NUT.



STEP 2. Insert T-SUPPORT between both sides of the CENTER SUPPORT BAR. Align holes and secure using 2, 3/8" x 1" BOLTS, LOCK WASHERS and NUTS.



STEP 3. Fit the SWING FRAME to the OUTER SUPPORT FRAMES. Attach the CENTER SUPPORT BAR to the OUTER SUPPORT FRAMES using 2, 3/8" x 2-1/2" bolts and washers in the order shown above, taking care to ensure that the section of the SWING FRAME WITH SPRING CONNECTORS (A2) is being connected to the OUTER SUPPORT FRAME also WITH SPRING CONNECTORS (C2).



STEP 4. Attach both SPRINGS to the mounting brackets found at the center of the SWING FRAME WITH SPRING CONNECTORS (A2). One SPRING will be attached to each connector.

Please visit our website for an assembly instructional video
www.pushovergate.com/#assembly



STEP 6. Connect each TURNBUCKLE to the OUTER SUPPORT FRAME.



STEP 7a. Connect each SPRING to its TURNBUCKLE. Be sure to lessen the tension of the TURNBUCKLE to enable this step. NOTE: Once the gate is installed within your fence, use the turnbuckles to adjust the swing frame to a vertical position. This enables the gate to be used on unlevel ground.



STEP 7b. The assembled SPRINGS and TURNBUCKLES



STEP 8. Insert the VERTICAL RODS into the SWING FRAME. The reinforced rods will fit into the larger holes. The regular rods will fit into the smaller holes.



STEP 9. Secure each rod with a cotter pin through the small hole found in each rod just underneath the top bar of the SWING FRAME.



INSTALLATION: Simply bolt between 2 wooden fence posts or wire to metal fence posts. Adjust turnbuckles.